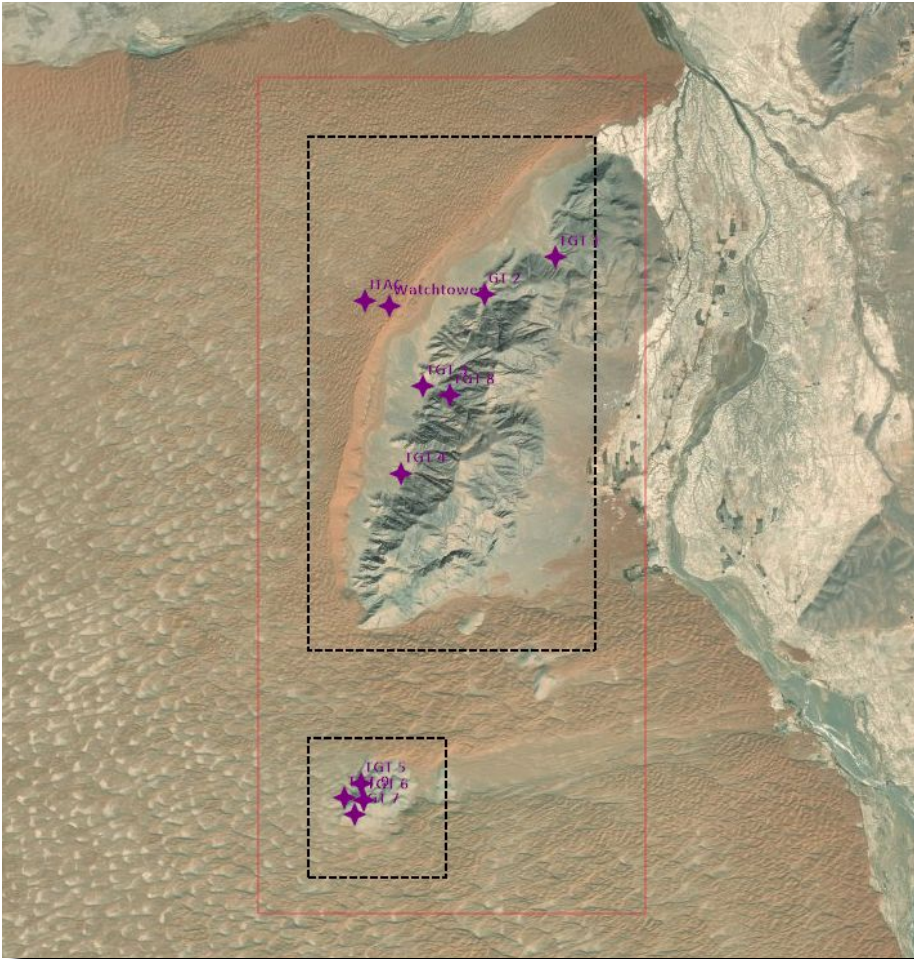


# AFGHANISTAN



# TEXAS HELO RANGE



# TEXAS HELO RANGE

● RANGE DESCRIPTION	p.3
● TARGETS DESCRIPTION	p.7
● TARGETS COORDINATES	p.8
● STANDARD PATTERNS	p.9
○ RANGE ENTRY/EXIT	p.10
○ GUNS - NORTHBOUND	p.11
○ GUNS - SOUTHBOUND	p.12
○ ROCKETS	p.13









## RANGE DESCRIPTION (2/4)

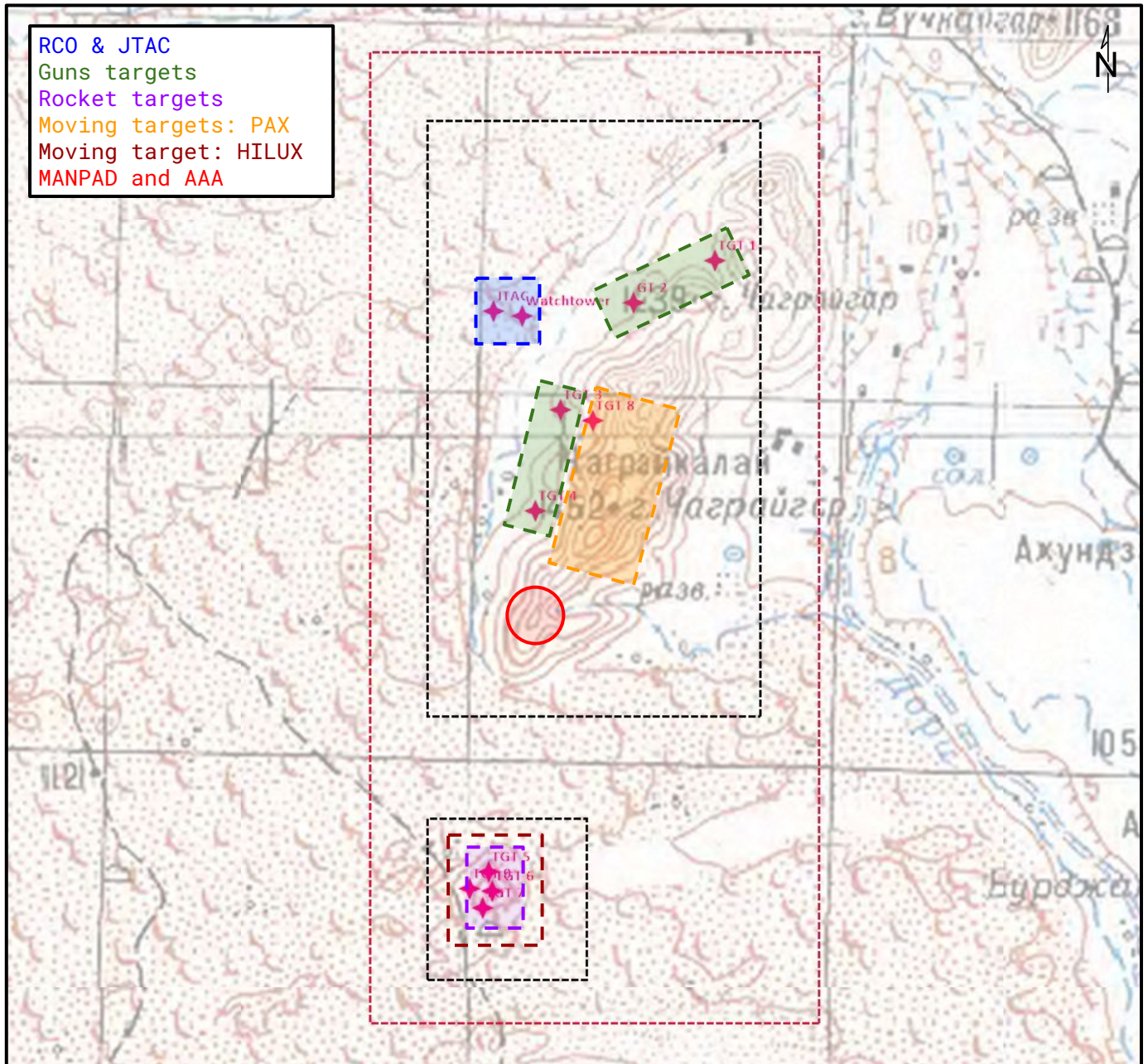
The **Range Control Officer** (RCO) operates from a watchtower positioned at 260° (T), 0.7 NM from TGT 2. Radio contact with the RCO, callsign **ATTILA** on **MAROON 1 (128.100 MHz)**, is mandatory prior to any live-fire activity. The RCO is responsible solely for weapons release clearance; all airspace deconfliction must be coordinated directly with Kandahar Approach.

A **JTAC**, callsign **BADGER 2**, is co-located with the RCO and can provide target marking and LASER designation on **PURPLE 2 (250.000 MHz)**.

The range features 2 segregated areas:

- **Bowling Alley area** (North), with 4 fixed guns targets (TGT 1 to 4) and 1 moving target for dynamic engagement scenarios (TGT 8);
- **Rocket area** (South), with 3 fixed rocket targets (TGT 5 to 7) and 1 moving target for dynamic engagement scenarios (TGT 9);

MANPAD and AAA threats can be manually activated for SAM threat training.

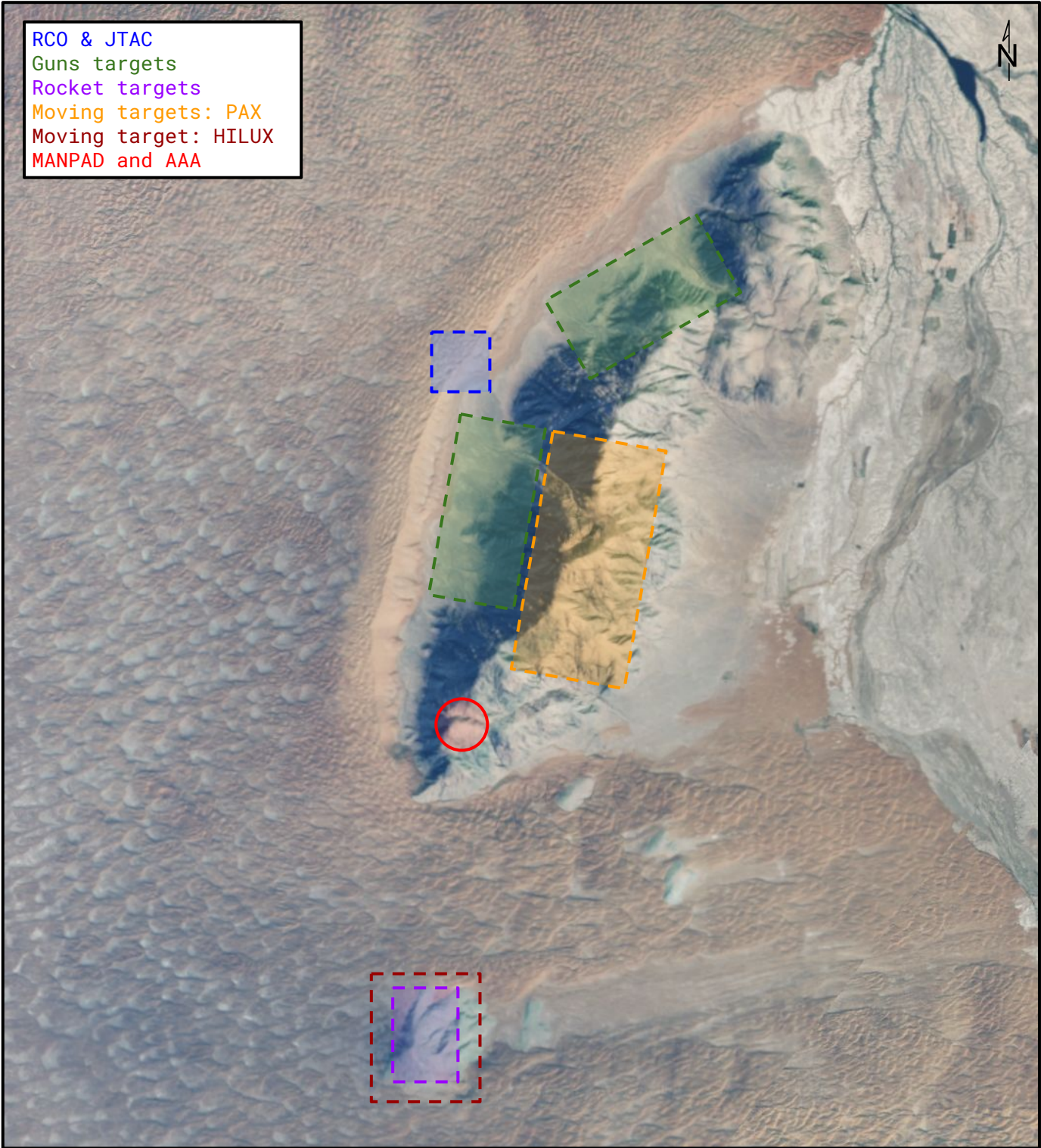


Detailed map of Texas Helo Range.





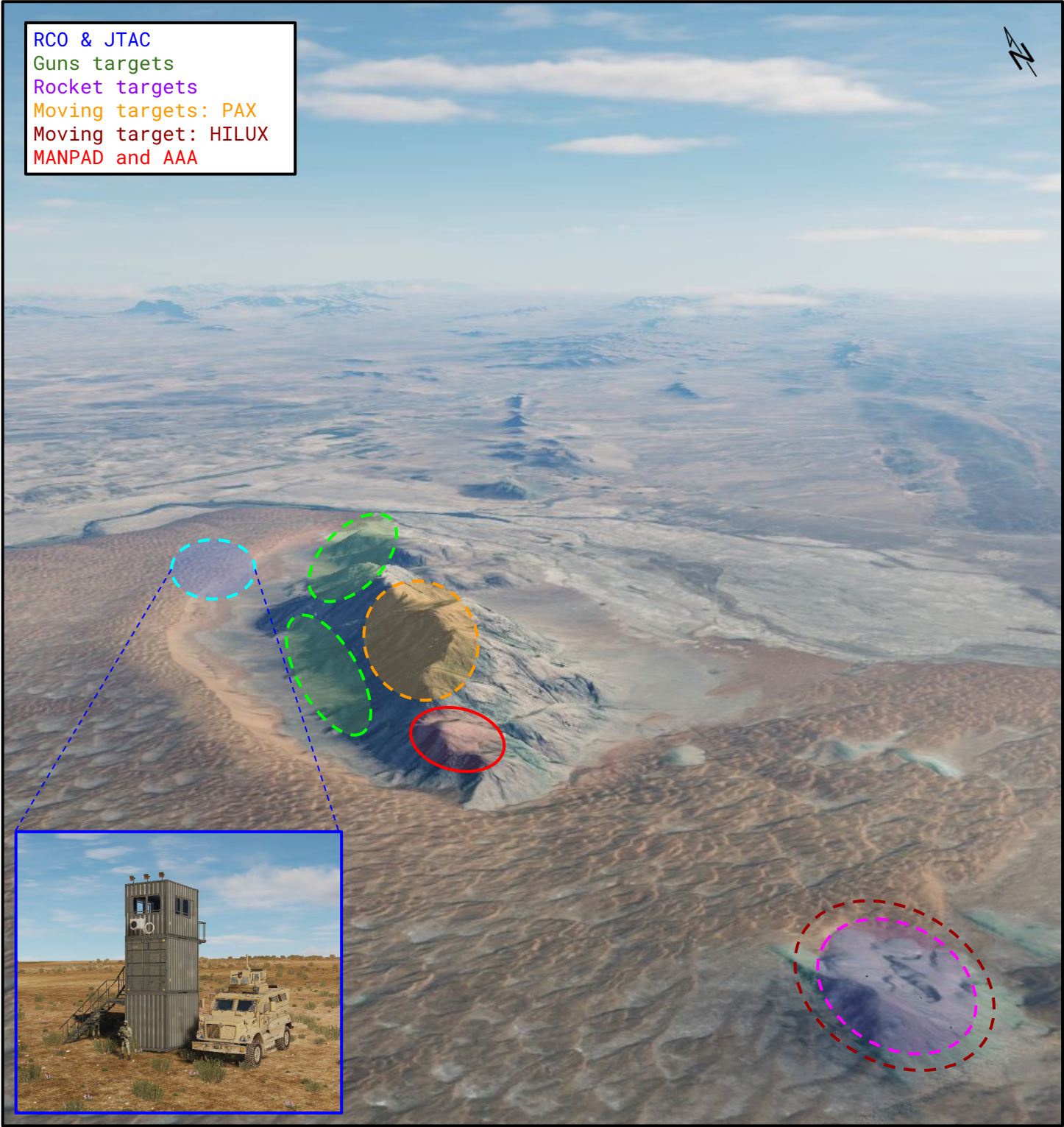
**RANGE DESCRIPTION (3/4)**



In-game satellite view of Texas Helo Range.

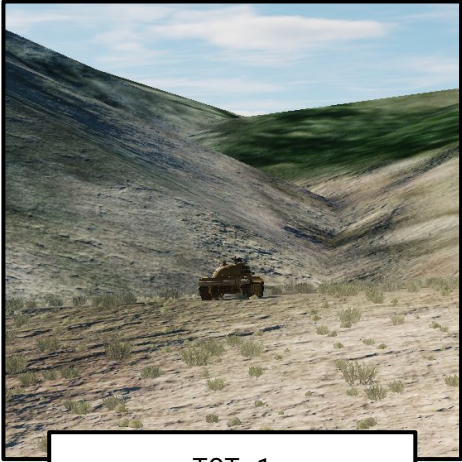


**RANGE DESCRIPTION (4/4)**

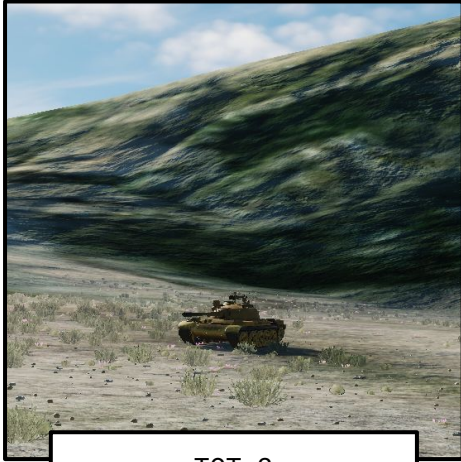




## TARGETS DESCRIPTION



TGT 1  
Fixed T-55



TGT 2  
Fixed T-55



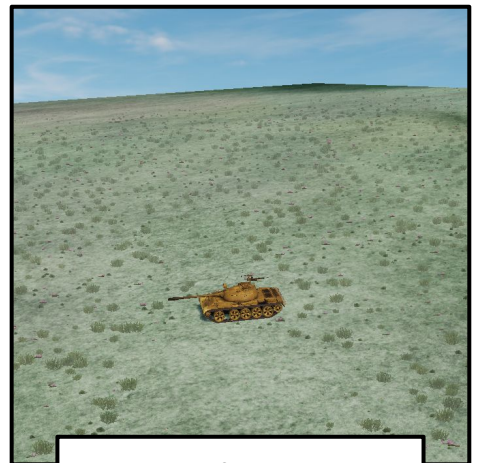
TGT 3  
Fixed T-55



TGT 4  
Fixed T-55



TGT 5  
Fixed T-55



TGT 6  
Fixed T-55



TGT 7  
Fixed T-55



TGT 8  
Group of moving PAX



TGT 9  
Moving HILUX



TARGETS COORDINATES

Name	Description	Coordinates	Altitude	Restrictions
Guns Targets				
TGT 1	T-55	N31°20.977' E065°53.083'	3,437 ft	Firing sector: 140°(T) ±20°
TGT 2	T-55	N31°20.729' E065°52.516'	3,483 ft	Firing sector: 120°(T) ±30°
TGT 3	T-55	N31°20.099' E065°52.014'	3,517 ft	
TGT 4	T-55	N31°19.506' E065°51.843'	3,564 ft	Firing sector: 110°(T) ±20°
Rocket Targets				
TGT 5	T-55	N31°17.370' E065°51.610'	3,932 ft	Firing sector: 270°(T) ±20°
TGT 6	T-55	N31°17.275' E065°51.625'	3,934 ft	
TGT 7	T-55	N31°17.185' E065°51.580'	3,934 ft	
Moving Targets				
TGT 8	Group of PAX	N31°20.039' E065°52.240'	3,600/4,700 ft	Firing sector: 120°(T) ±40°
TGT 9	HILUX	N31°17.290' E065°51.390'	3,850/3,950 ft	Firing sector: 270°(T) ±20°





## **STANDARD PATTERNS**

Upon initial contact, and depending on traffic density at the range, aircraft will be directed either to hold north of the Dori river or to the appropriate target for immediate entry.

### **HOLDING:**

- Airspace: below Kandahar Class C airspace (1,000'AGL)
- Anchor Point: north of 360°(T), 2.0 Nm from TGT 2, track: 360°/180°(T)
- Altitude: recommended below 250'AGL
- Radio: contact RCO ATTILA on MAROON 1

### **ENTRY:**

- Below 2,000' AGL, southbound via Entry Point
- Aircrew must obtain clearance from ATTILA prior to crossing south of the Dori river
- Remain outside of Bowling Alley and Rocket areas during transit

### **GUNS PATTERNS:**

- Below 6,000' AMSL: Day or Night, VMC only
- Height: no lower than 50'AGL
- Radio: call "IN" with attack details before entering the firing zone
- Routing: overfly watchtower before first pattern, then remain within Bowling Alley area
- Direct entry: along mandatory attack heading
- Side entry for door gunners:
  - TGT 1 and TGT 2: northbound / right side gunner
  - TGT 3 and TGT 4: southbound / left side gunner
- Minimum and maximum firing range: 100 to 1,000 m

### **ROCKET PATTERNS:**

- Below 6,000' AMSL: Day or Night, VMC only
- Height: no lower than 50'AGL
- Radio: call "IN" with attack details before entering the firing zone
- Enter Rocket area from the north
- Routing: remain within Rocket area, egress via the south
- Exit Rocket area from the south

### **EXIT:**

- Below 2,000' AGL, eastbound via Exit Point
- Remain eastbound until crossing the Dori river

### **MANDATORY RADIO CALLS:**

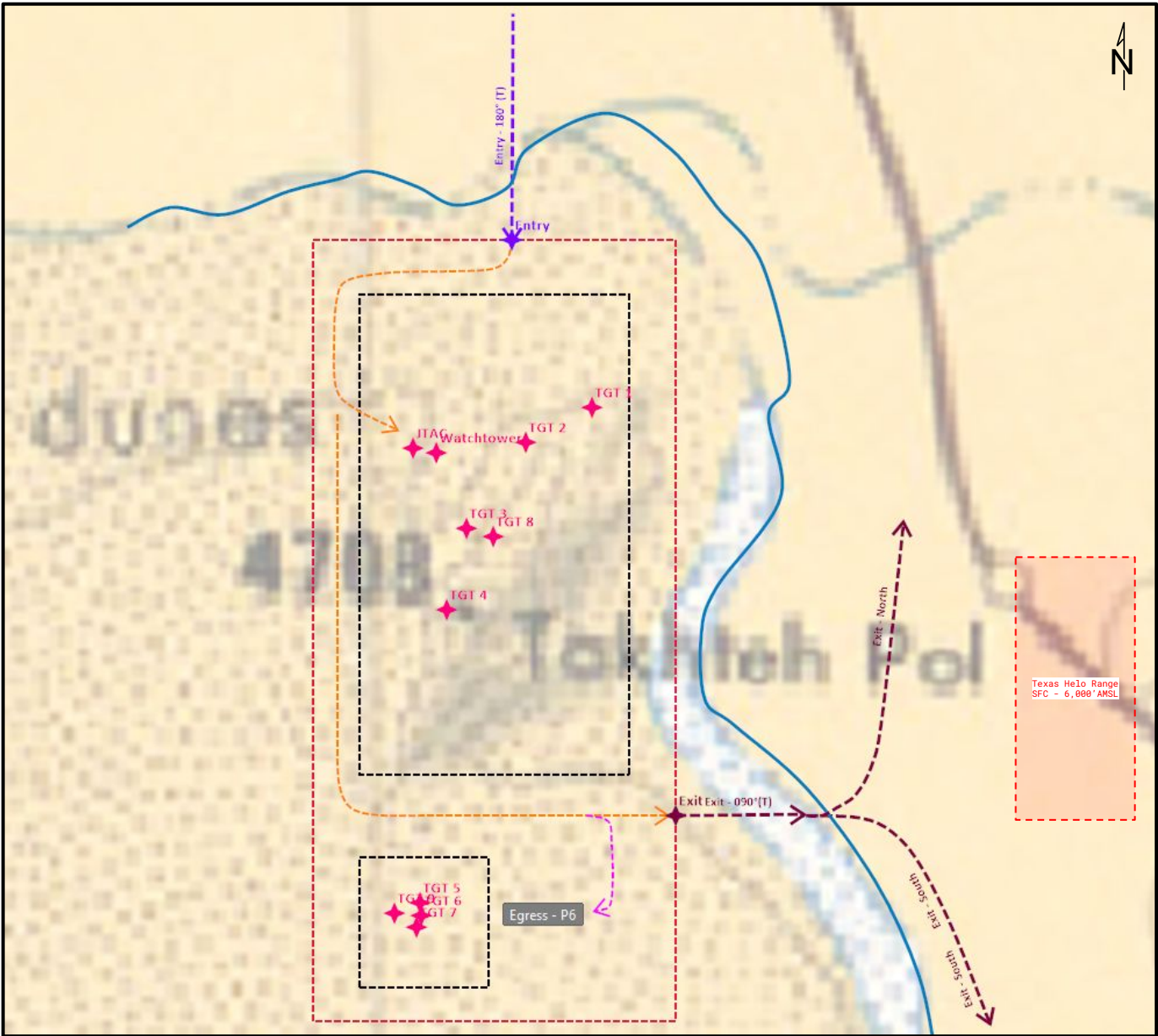
- "IN" call: before entering the firing zone and NLT 30" before attack
  - "IN"
  - Weapons type (guns, rockets, etc...)
  - Status (dry, hot, LASER if applicable)
- "OUT" call:
  - "OUT"
  - Status ("DRY", "HOT", "NO DROP", "LASING")

### **SAFETY:**

- Do not fly East of Bowling Alley target area at any altitude
- Do not fly West of Rocket target area at any altitude
- Do not fly West of Texas Helo Range when Tarnak Range is active



**RANGE ENTRY/EXIT**

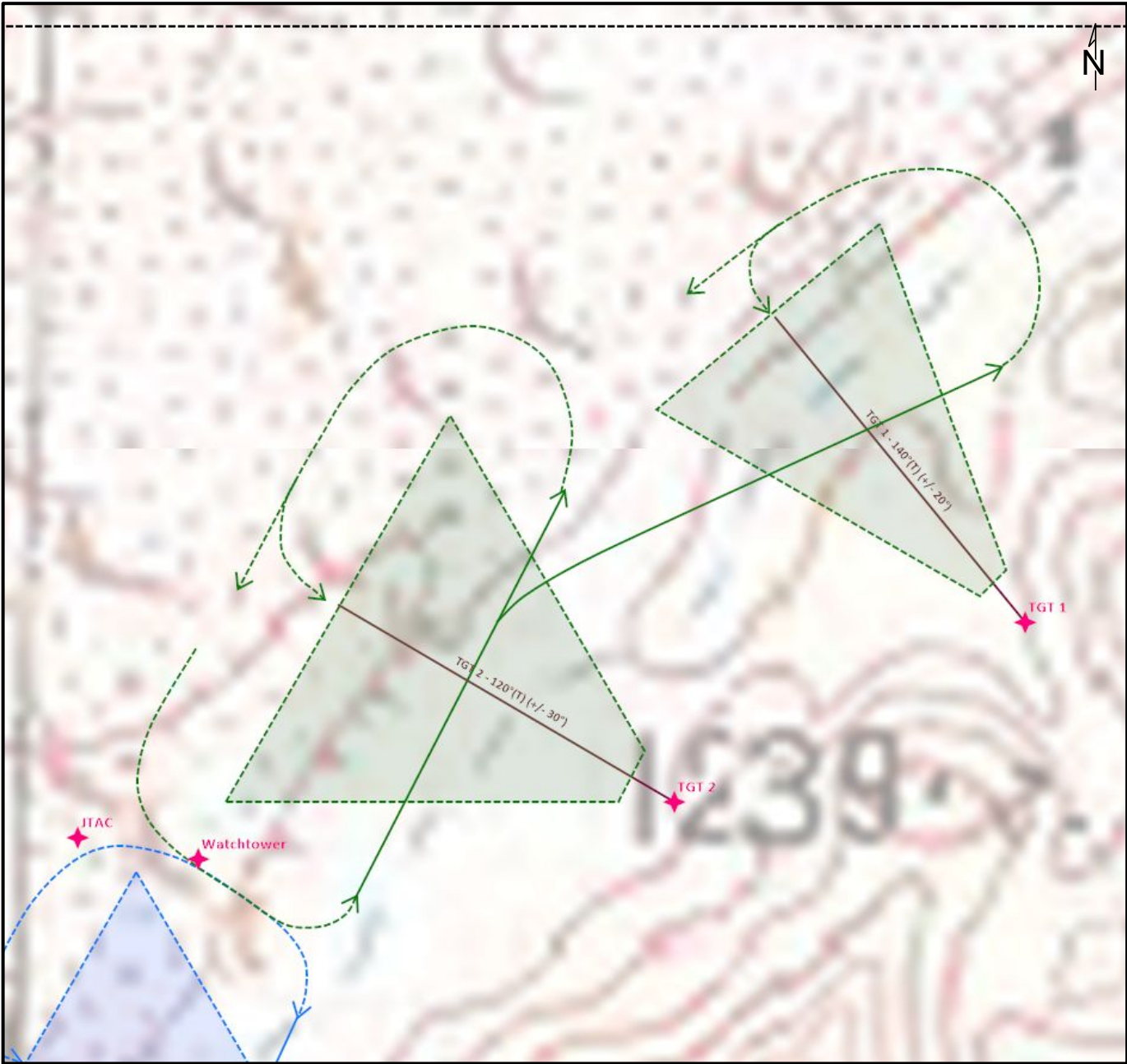


Name	Description	Coordinates (WGS 84)	Altitude (AMSL)	Position
Anchor Point	North of Dori river	N31°22.800' E065°52.400	3,303 ft	355°(T) 2.0 Nm / TGT 2
Entry Point	Container	N31°22.200' E065°52.400'	3,470 ft	355°(T) 1.5 Nm / TGT 2
Exit Point	Container	N31°18.000' E065°53.800'	3,479 ft	070°(T) 2.0 Nm / TGT 5





**GUNS PATTERNS**  
**NORTHBOUND / RIGHT SIDE GUNNER**

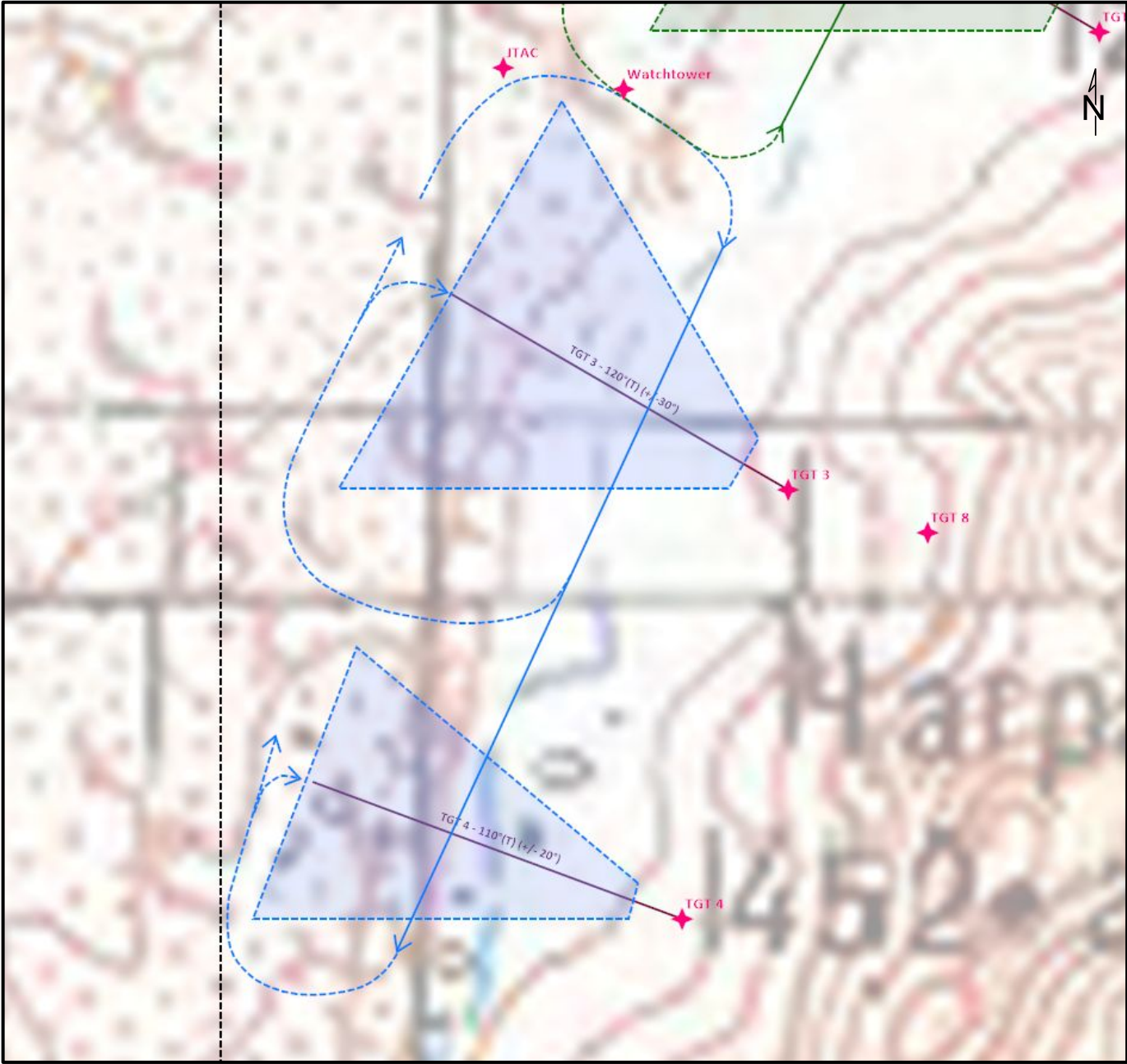


Minimum firing range: 100 m  
Maximum firing range: 1,000 m

- Firing sectors:
- TGT 1 - 140°(T) ±20°
  - TGT 2 - 120°(T) ±30°



**GUNS PATTERNS**  
**NORTHBOUND / RIGHT SIDE GUNNER**

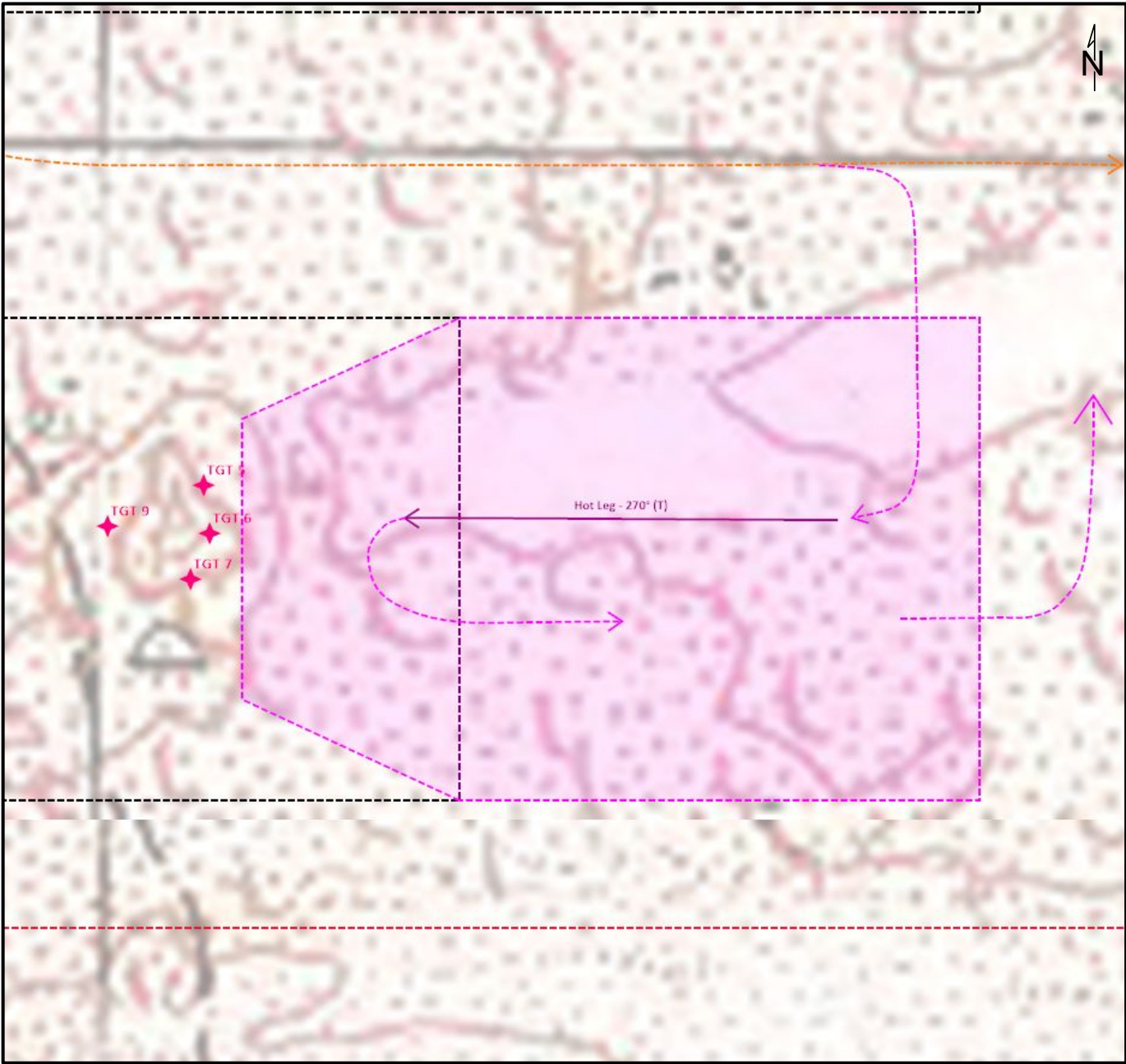


Minimum firing range: 100 m  
Maximum firing range: 1,000 m

- Firing sectors:
- TGT 1 - 140°(T) ±20°
  - TGT 2 - 120°(T) ±30°
  - TGT 8 - 120°(T) ±40°



## ROCKET PATTERNS



Minimum firing range: 150 m  
Maximum firing range: 3,000 m

Firing sectors:

- TGT 5,6,7,9 -  $270^{\circ}(T) \pm 20^{\circ}$